

Fall 2024



Public Health
Prevent. Promote. Protect.
Greene County

CMH News

The Children with Medical Handicaps (CMH) program is an Ohio Department of Health (ODH) program that is offered by Greene County Public Health. CMH connects families of children with special health care needs to a public health nurse (PHN) and a network of quality providers. The program works like a back-up insurance plan and helps families obtain payment for the services their child needs.

Your Greene County CMH Public Health Nurses are:

- Susie (937) 308-7010
- Stephanie (937) 805-9032

Inside this issue

Adverse & Positive Childhood Experiences.....2

Emergency Services.....3

Olympics3

CMH providers.....4

GCPH survey.....4

****NEW ANNOUNCEMENT****

The maximum age of eligibility for the Children with Medical Handicaps (CMH) treatment program increased to the age of 25 on July 1, 2024. If medical and financial eligibility are approved, treatment services will be effective 7/1/2024 and will have an expiration date the day before the individual’s 25th birthday.

Ohio Department of Health PARENT CONSULTANTS

Parent Consultants Can:

- Provide support for families who receive services through the [Children with Medical Handicaps \(CMH\) program](#) (assisting with emotionally heavy cases, cost-shares, unique situations).
- Obtain and share **lived experiences**, feedback, and the needs of the community to strengthen programs.
- Help families find [additional support](#) (other state agencies, nonprofits, local partners).

The role of the parent consultants at the Ohio Department of Health (ODH) involves being a support to the [30+ programs within the Bureau of Child and Family Health](#) — offering a parent perspective and voice. Parent consultants strive to make sure all ODH efforts are family-centered, community-based, and culturally sensitive.



How Can a Family Voice Be Helpful?

We know that families with children with medical complexities often walk difficult paths. Our parent consultants understand this, **because they have lived it** and are now dedicated to helping to take away some of the worry and frustration parents experience. **As they listen, they help connect families with the right resources.** Then, they **amplify that family voice, sharing feedback** and insight with ODH, to better strengthen our services and support for families across Ohio.

Let Us Find You the Support You Need. Connect With Us Today.

Lynne Fogel
Bureau of Child and Family Health
Lynne.Fogel@odh.ohio.gov
P: 614-558-7963



December West
Bureau of Child and Family Health
December.West@odh.ohio.gov
P: 614-740-0735

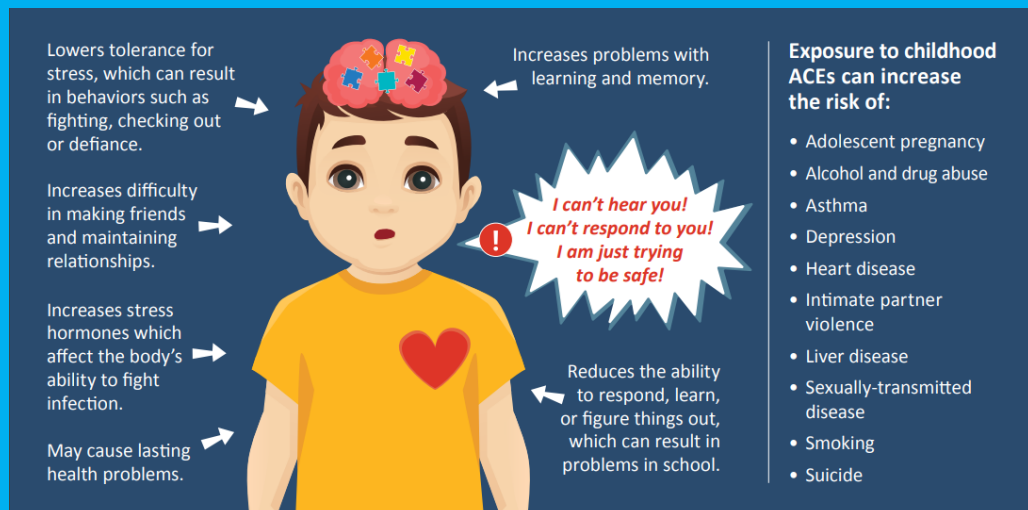
Understanding ACEs & PCEs

Adverse Childhood Experiences (ACEs) are potentially stressful traumatic events in a child's life. Traumatic events can occur at home, at school, really anywhere. Consistent exposure to negative events in childhood are known to be linked with lifetime health problems. Many ACEs are preventable.

Although, we know that not all negative experiences in life can be avoided. What is important as a parent is communicating with our child and guiding them through these negative experiences.

Positive Childhood Experiences (PCEs) are defined as having supportive nurturing relationships and environment. PCEs are associated with improved mental and physical health development and outcomes.

One of the challenges as a parent is to overcome our own childhood ACEs and educate ourselves in how we can be the best version of ourselves for them. Please review the links below to learn more about ACEs and PCEs to learn more in how you can help your child overcome challenges



ACEs (Adverse Childhood Experiences) can include:

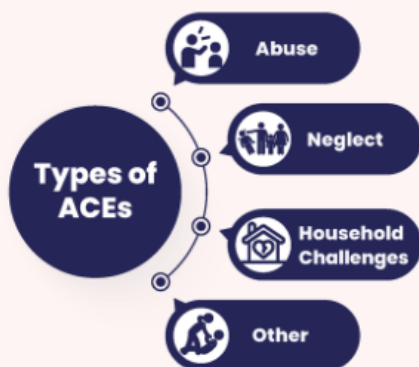
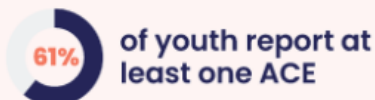
- Abuse: Emotional /physical /sexual
- Bullying /violence of /by another child, sibling, or adult
- Homelessness
- Household: Substance abuse / mental illness / domestic violence / incarceration / parental abandonment, divorce, loss
- Involvement in child welfare system
- Medical trauma
- Natural disasters and war
- Neglect: Emotional / physical
- Racism, sexism, or any other form of discrimination
- Violence in community

! SURVIVAL MODE RESPONSE

Toxic stress increases a child's heart rate, blood pressure, breathing and muscle tension. Their thinking brain is knocked off-line. Self-protection is their priority.

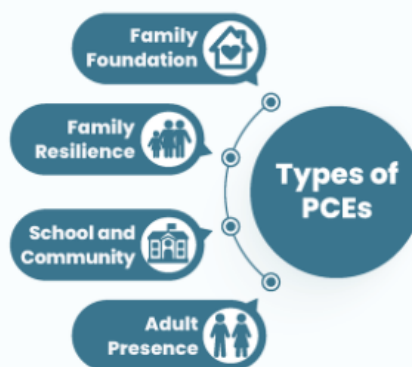
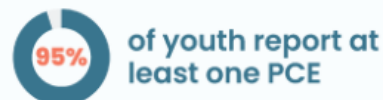
Adverse Childhood Experiences

Events that occur in childhood that may increase the risk of adverse outcomes later in life



Positive Childhood Experiences

Factors that have been found to promote healthy child development and well-being



<https://www.pacesconnection.com/blog/handouts-for-parents-about-aces-toxic-stress-and-resilience>

<https://www.acesaware.org/wp-content/uploads/2019/12/10-Parenting-with-ACEs-English.pdf>

<https://www.acesaware.org/resources/resources-by-type/patient-family-education-handouts-clinical-resources-for-pediatric-providers/>

[https://publications.aap.org/pediatrics/article/152/1/e2022060951/191565/Positive-Childhood-Experiences-and-Adult-Health?](https://publications.aap.org/pediatrics/article/152/1/e2022060951/191565/Positive-Childhood-Experiences-and-Adult-Health?autologincheck=redirected)

[autologincheck=redirected](#)

<https://www.uclahealth.org/news/release/study-reveals-types-positive-childhood-experiences-pces>

Emergency Services

Emergencies are scary for anyone. Discussing with you child what an emergency looks like and who to call is important to assist in your child's safety if an event would occur. Below are some things you may discuss with your child to ensure they are prepared for emergencies.



- What does an emergency look like?
 - ⇒ Someone is choking, a fire, a car accident
- What should they do **first** in an emergency?
 - ⇒ Make sure they are safe
- Who do they call during an emergency?
 - ⇒ A teacher, a neighbor, calling 911
 - ⇒ Make sure your children know the 9-1-1 operator, police and fire rescuers are safe to share to share personal information with during an emergency
 - ⇒ Discuss with your children what a 9-1-1 call will be like
 - ⇒ Discuss with your children how they should evacuate your home during an emergency

Other safety tips:

- Make sure your house number is easily identifiable from the street, so emergency personnel can find your home easily.
- Make sure your child knows your address, including floor and apartment number.

[Teaching Your Child How to Use 911 \(for Parents\) | Nemours KidsHealth](#)

Do you know the different Olympics?

		
<ul style="list-style-type: none"> • Founded in 1894 • Varying ability levels, both able-bodied and athletes with disabilities have participated. • 35 different sports offered 	<ul style="list-style-type: none"> • Introduced in 1948, but not officially founded until 1989 • “The Paralympics welcomes athletes from 10 categories of impairment” • 28 different sports offered • 2024 will be played August 28th– September 8th <p>IPC - Paralympics News, Sports and Results</p>	<ul style="list-style-type: none"> • Founded in 1968 • “People of all skill levels with an intellectual disability, cognitive delay, or developmental disability”. • Competitions in 172 countries • 32 different sports offered • Last played in Germany in 2023 <p>World Games (specialolympics.org)</p>

Other CMH Providers in this area

When scheduling with a provider for your approved services, please double check that they still accept CMH. Unfortunately, changes do occur from time to time.



Do you need help finding a medical provider? If so, give us a call.

PEDIATRICIANS

Pediatric Association of Dayton

937-320-1950 (Beavercreek)

937-832-7337 (Englewood)

937-436-2866 (Kettering)

Prime Med

937-320-3888 (Beavercreek)

Ohio Pediatrics

937-236-5396 (Dayton)

937-299-2339 (Kettering)

VISION

DCH Ophthalmology

937-641-3000

Dayton Eye Association

937-320-2020 (Beavercreek)

Bloom Family Eye Care

937-723-7772

GLASSES

Clarkson Eyecare

(Milford ONLY)

513-831-3166

Pediatric Ophthalmology Associates (Columbus)

614-224-6222

THERAPY SERVICES

ABC Pediatrics

937-427-9200

Novacare (Columbus)

937-320-9131

Synergy Family Therapies

937-428-6273

PEDIATRIC DENTISTS

Centerville Pediatric Dentistry

937-582-0430

ABC Dental (Huber heights)

937-938-7678

Beavercreek Pediatric Dentistry

accepts CMH as secondary only

937-426-2653

Orthodontist

Orthodontics Association-Lima

419-229-8771

DURABLE MEDICAL EQUIPMENT

Kaup– 1-866-526-0976

Byram– 1-800-303-2273

Pediatric Home Service

614-790-0200

Hanger Clinic

937-228-5462

Activ Styles

1-800-651-6223

Fidelity Orthopedics

937-228-0682

American Orthopedics

937-342-0150

***Not every child with a CMH LOA has prescription benefits, but for those who do, the pharmacy benefit information is:**

Group# ohchildren

BIN# 610084

PCN: drbcprod

Please call your PHN with any questions.



Public Health
Prevent. Promote. Protect.

Greene County



Department of Health

Children with Medical Handicaps



Help us improve our services by filling out a short survey. We value your feedback.